

3500 PILOT TRAINING WING



MISSION

LINEAGE

3500 Pilot Training Wing (Advanced, Multi-Engine)
3500 Pilot Training Wing (Basic, Multi-Engine), 27 Jun 1952
Redesignated 3500 Pilot Training Wing (Basic), 1 Sep 1958
Redesignated 3500 Pilot Training Wing, 5 Jan 1961
Inactivated, 1 Oct 1972

STATIONS

Barksdale AFB, LA 26 Aug 1948 14 Oct 1949
Lubbock (later Reese AFB), TX, 1 Oct 1949-1 Oct 1972

ASSIGNMENTS

WEAPON SYSTEMS

COMMANDERS

Col Dross Ellis, #1959
Col James A. Gunn III

HONORS

Service Streamers

Campaign Streamers

Armed Forces Expeditionary Streamers

Decorations

EMBLEM

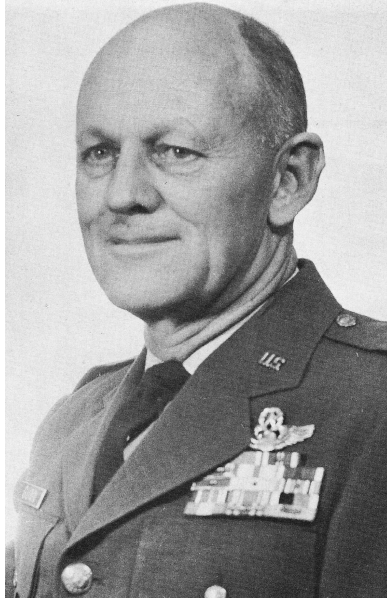


MOTTO

OPERATIONS

Air Training Command activated Lubbock on 1 August 1949 as an advanced multi-engine pilot training school. The first class convened on 1 November. The command had directed that the 3500th Pilot Training Wing (Advanced, Multi-Engine) relocate from Barksdale to Reese during the late summer.

3500 Pilot Training Wing was replaced by the 64 Flying Training Wing, 1 Oct 1972



Col James A. Gunn III, commander



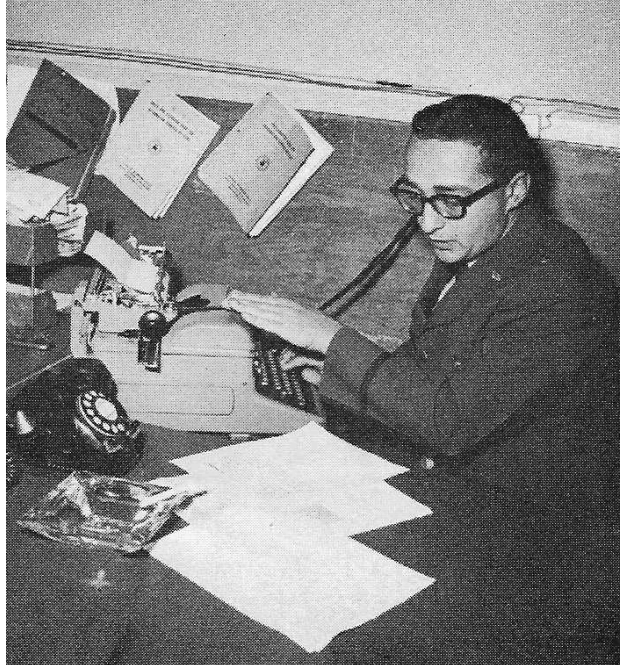
Lt Col J. W. Christian, Chief of Administration Services



Maj J. G. O'Connell, Wing Inspector dictates to Mrs. Miller, secretary



Working up Airmen personnel figures



Getting out a news release



Resident auditors complete audit

USAF Unit Histories
Created: 20 Sep 2021
Updated:

Sources

Air Force Historical Research Agency, U.S. Air Force, Maxwell AFB, AL.
Unit Yearbook, *Reese AFB, TX, 3500 Pilot Training Wing*, Army and Navy Publishing, Co, Inc. Baton Rouge, LA, nd.